



New Product Announcement

EUROPEAN APPROVED BOAT TRAILERS



**COMPANY
CERTIFICATION
OBTAINED
OCTOBER 2008**



ROLLER

EUROPEAN APPROVED ADJUSTABLE TRAILERS

TRAILERS MEET EC DIRECTIVE 2007/46/EC

Load Rite Trailers, a major manufacturer of quality galvanized boat trailers, has been certified for manufacturing to exacting EC-Type standards. With twelve approved models available in roller and bunk configurations, Load Rite trailers are ready to slip under a variety of boats destined for European delivery.

BUNK



265 Lincoln Highway
Fairless Hills, PA 19030

The **RITE** Choice Lasts Longer

LOAD RITE
The Rite Choice Lasts Longer

EC CERTIFICATE OF CONFORMITY
for complete vehicles

The undersigned hereby certifies that the vehicle:

0.1. Make: H.J.W. van der Heijden

0.2. Type: LOAD RITE

variant: LR1

version: A

0.2.1. Commercial name(s):

0.4. Category: 1724509RB

0.5. Name and address of the manufacturer of the base vehicle: O2

0.6. Location of the statutory plates: Load Rite Trailers Inc.
265 Lincoln Highway
Fairless Hills, PA 19030
USA

Vehicle identification number: - against front side frame, at right hand side
5A4UV4N1382003411

Location of the vehicle identification number on the chassis: - against front side frame, at right hand side

Conforms in all respects to the complete type described in EC type approval 02/2007/46-0443/00, dated: 29-04-2009.
The vehicle can be permanently registered without further EC type-approvals in Member States having right or left hand traffic and using metric or imperial units for the specifications.

800-562-3783
www.loadrite.com

Witrijik: 29-04-2009
Position: Representative of the manufacturer
Signature:

LOAD RITE

FEATURES AND OPTIONS

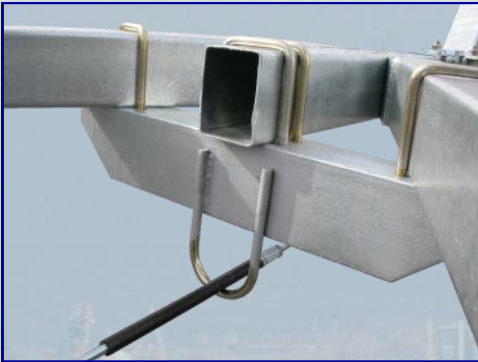
**MANUFACTURED
TO EXACTING EU
DIRECTIVE
2007/46/EC
STANDARDS**



Removable light bar with fully EC-type certified plug-n-play lighting. Light bar extenders slide into frame rails.



Adjustable winchstand with cable winch and non-marking roller assembly.



Fully galvanized frame components, plated hardware, and shielded brake components.



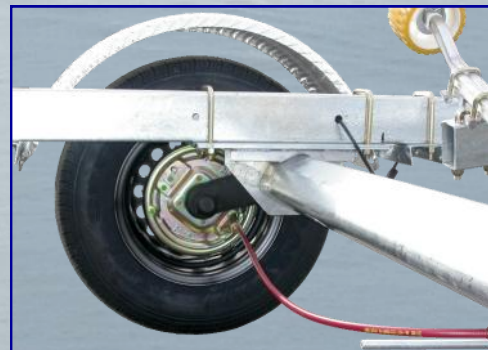
Fully articulated non-marking roller assemblies launch and load smoothly and offer superior hull support.



Corrosion resistant aluminum diamond-plate fenders, radial tires, and **AL-KO** axles.



AL-KO torsion axles with waterproof bearings and stainless steel cable operated drum brakes.



Each trailer is fully accredited with documented markings.

TOW DIRECTLY FROM THE PORT.