



Image of Model #5S-AC183100102TB1. Options and features may differ.

## SPECIFICATIONS

| CAPACITY | BOW EYE TO TRANSOM MAXIMUM | BOW EYE TO TRANSOM MINIMUM | BUNK TYPE | AXLES | BRAKES | TIRE SIZE | OVERALL WIDTH | BETWEEN FENDERS | OVERALL LENGTH |
|----------|----------------------------|----------------------------|-----------|-------|--------|-----------|---------------|-----------------|----------------|
| 3,100    | 18' 11"                    | 13' 11"                    | C         | 1     | 1      | ST215/14C | 101"          | 82"             | 20' 2"         |

## STANDARD FEATURES



### Target Bunks\*

Carpeted bunks located just aft of the tongue area but ahead of main bunks. Positioned low in the frame to "catch" the keel as the boat is loaded and prevent keel to crossbar contact while launching. Target bunks are standard equipment on all Load Rite Elite LR-AB, LR-ASKI, LR-AS, and 5 STARR 5S-AC tandem and triaxle models. **\*Optional on some single axle Elite LR-AB, 5 STARR 5S-AC, and some galvanized models.** Some applications may require an additional crossbar be installed.



### Aluminum I-Beam Frame

Patented designs offer many features that add functionality to a great look. Integrated wire gutter beneath the top flange securely protects wiring and brakelines. Models to 7,300 lbs. capacity feature a captured fastener channel along the bottom flange offering invisible mounting points for other features. Web mounted crossbars strengthen the overall frame assembly.



### Bias-Ply Tires

High quality USDOT-rated tires. Standard on all 5 STARR, pontoon, skiff and jon models, and models 90" wide and narrower. Easily upgraded to radial tires at time of order. Includes [KENDACARE - LOADSTAR TIRE ROADSIDE ASSISTANCE PROGRAM](#).



### Disc Brakes (Where Installed)

This trailer is equipped with disc brakes (where installed). Load Rite recommends disc brakes on all wheels where available. Disc brakes are self-adjusting and self-cleaning and require minimal maintenance in order to continue to deliver top performance. Follow maintenance tips in your Owners Manual for more detailed instructions.



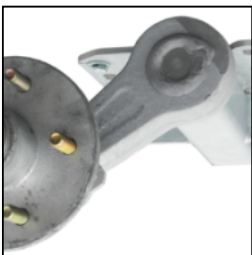
### Balanced Wheels 13" and Larger

CounterAct Wheel Bead Balancing is now included on all 13" and larger wheel assemblies as a standard feature. The wheels dynamically balance during each use. Visit [counteractbalancing.com](http://counteractbalancing.com) for more information.



### Tongue Jack

Tongue jacks are standard equipment on all Load Rite Elite models 90" wide and wider except two-place PWC models, all 5 STARR models, and all UT, EQ, and CH models. Appearance and specifications vary by application. Tongue jacks are optional on all other models.



### Torsion Axles

Torsion axles provide independent suspension, exceptional rigidity, corrosion resistance, and a far superior ride to any leaf spring suspension. Available on most models.



### Continuous All Wood Bunks

Marine-grade carpeting over wood slab bunks provide solid support without marring the hull during loading and unloading. Initial setup is simplified by this basic design.



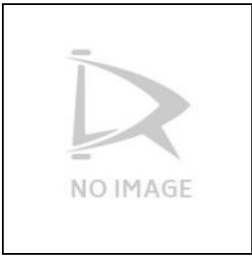
### NMMA / NATM Certified

Each year Load Rite trailers undergo a detailed inspection process in order to earn the right to proudly display this certification on products we manufacture.



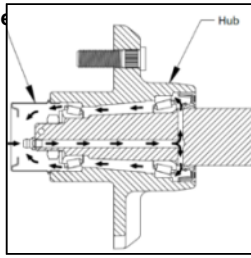
### LED Lighting

LED lights offer far greater reliability than incandescent fixtures. Long-lasting and waterproof design make these lights ideal for any trailer application.



**KendaCare – LoadStar® Tire Roadside Assistance Program**

[Click here](#) for more information from Americana Tire.



**Greaseable Hubs**

Trailer with peace of mind knowing that you've inspected the condition and topped off the lubricant level in each hub of your trailer.



**Aluminum Diamond Plate Fenders**

A stylish design combined with extreme durability. Standard on all single axle models with 13" and larger wheels.



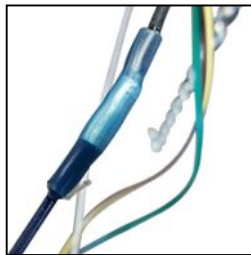
**One-piece aluminum fender**

Stylish one-piece aluminum diamond-plate fender design is featured on all tandem and triaxle boat trailers.



**DOT Rated Tires and Lighting**

All Load Rite original equipment tires and lighting components are fully DOT approved.



**Heat-Shrunk Sealed, Concealed Wiring**

Standard equipment on all trailers 17' and longer except welded frame models.



**Drop Style Tongue Jack**

Standard equipment on many high capacity galvanized and aluminum models.



**2 Plus 3 Years Limited Warranty**

## OPTIONS



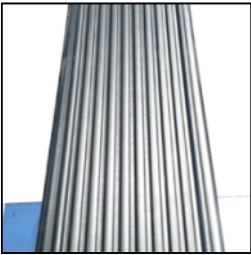
### Brakes on All Axles

**Important Safety Issue - Brake Requirements** Brake laws vary by state and require dealers to sell trailers that comply with the brake laws of the state where the trailer will be registered. ***This is a very important safety issue.*** For full information contact the appropriate state Motor Vehicle Department. As always, Load Rite recommends brakes on all axles where available.



### Carpeted Skirted Fender

Skirted fenders protect the hull finish in two ways. First, the carpet facing the hull help protect from fender contact while loading and unloading. Second, it protects the hull from road debris picked up by the tires. Two valuable precautions for a treasured friend. Optional on *most* models with aluminum fenders as standard equipment. Some models require galvanized fender step to accommodate this option.



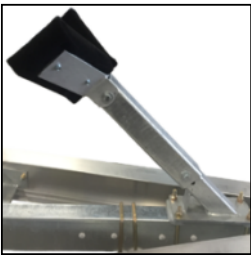
### Plastic Bunk Covers

These multi-purpose covers provide a smooth surface to help a metal-hulled boat or pontoon to slide easier when launching and loading. They also offer an insulating barrier to help prevent corrosion for metallic hulled craft. Protect your aluminum hull. ***Highly recommended for metal-hulled boats and pontoon applications. Not recommended for gel-coat, plastic, or painted metal hulls.***



### Target Bunks

Target bunks are carpeted bunks located just aft of the tongue area but ahead of main bunks. Positioned low in the frame to "catch" the keel as the boat is loaded and prevent keel to crossbar contact while launching. Target bunks are optional on many single axle Load Rite Elite LR-AB and 5 STARR 5S-AC models and some galvanized models. Some applications may require an additional crossbar be installed.



### Independent Bow Stop

Adjustable, galvanized steel, Independent Bow Stop Assembly. Telescopic post, 2x6? wooden carpeted wedge pivots to adapt to bow angle. Mounts to the tongue. Useful as a forward stop for boats with a high bow, bow pulpit or windlass that could interfere with normal winchstand operation.



### Stainless Steel Disc Brakes

Optional stainless steel brakes available for *most* 14", 15" and 16" wheel applications. Can be used with surge and electric over hydraulic actuators.\* *May require optional axle installation. Check with your local dealer before ordering.*



### Stainless Main Frame Hardware

Available for most Load Rite Elite LR-AB, LR-ASKI, LR-AR, LR-AS and 5 STARR 5S-AC aluminum models. Includes main frame hardware. *Excludes bunk, roller, winchstand, and coupler / actuator hardware. Not available for galvanized frame models.*



### Steady Rest

Carpeted bunk section positioned above and perpendicular to the trailer tongue. Provides an extra resting and balance point, and helps prevent keel contact with the tongue when loading in certain ramp conditions.



### Electric Over Hydraulic Brakes

EOH brakes offer electric in-cab control of standard hydraulic disc brakes. Requires in-cab controller and 7-pin round electrical connection to the tow vehicle.



### PVC Side Guides

PVC side guides provide additional guidance when lining up to load on steep ramps. Optional on most other boat trailers including all 5 STARR models.



### Swing Tongue

Applications are limited by trailer capacity and tongue length. Not available on models exceeding 6,000 lbs. capacity. Consult with a dealer.



### Radial Tires

Smoother riding and longer wear life than many bias-ply tires. A highly recommended upgrade. Available for 13" and larger wheels.



### Stainless Brakelines

A valuable upgrade to any trailer, but especially those to see service in coastal regions with salt water exposure.

### Aluminum Wheels

A stylish option available with bias-

ply or radial tires for most models  
in 12", 13", 14", 15" and 16" sizes.



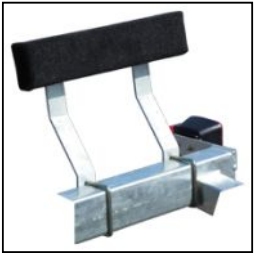
**Drop-Style Tongue Jack**

An upgraded jack that provides

greater capacities and fast setup  
with no need to swivel.







### **Carpeted Side Guides**

Standard on most skiff and jon models.