



Image of Model #20280096VT. Options and features may differ.

SPECIFICATIONS

CAPACITY	SUSPENSION	BOW EYE TO TRANSOM MAXIMUM	BOW EYE TO TRANSOM MINIMUM	BUNK TYPE	AXLES	BRAKES	TIRE SIZE	OVERALL WIDTH	BETWEEN FENDERS	OVERALL LENGTH
2,800	TORSION	18' 6"	16' 11"	V	1	0	ST205/R14 C	95"	77"	21' 7"

STANDARD FEATURES



Radial Tires

Tow smoother, quieter, and farther with radial tires installed on your trailer. Original equipment on Load Rite Elite 5 STARR models with 13" and larger wheels except skiff and pontoon models. Optional on all pontoon and skiff / jon models. Includes [KENDACARE - LOADSTAR TIRE ROADSIDE ASSISTANCE PROGRAM](#).



Disc Brakes (Where Installed)

This trailer is equipped with disc brakes (where installed). Load Rite recommends disc brakes on all wheels where available. Disc brakes are self-adjusting and self-cleaning and require minimal maintenance in order to continue to deliver top performance. Follow maintenance tips in your Owners Manual for more detailed instructions.



Galvanized Steel Frame

Tubular structural steel, fully hot dip galvanized, provides the ultimate finish for any boat trailer. Tubular design shrouds wiring and brake lines from damage. All machining and welding is performed before galvanizing, so there are no surfaces left unprotected from a boat trailer's ultimate enemy: corrosion.



Balanced Wheels 13" and Larger

CounterAct Wheel Bead Balancing is now included on all 13" and larger wheel assemblies as a standard feature. The wheels dynamically balance during each use. Visit counteractbalancing.com for more information.



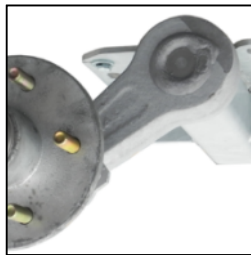
Tongue Jack

Tongue jacks are standard equipment on all Load Rite Elite models 90" wide and wider except two-place PWC models, all 5 STARR models, and all UT, EQ, and CH models. Appearance and specifications vary by application. Tongue jacks are optional on all other models.



Adjustable Carpeted Bunks

Traditionally known as V-bunks, this system offers both high strength and a wide range of adjustability. Out of adjustment? There are shorter and taller bolster brackets available in many heights.



Torsion Axles

Torsion axles provide independent suspension, exceptional rigidity, corrosion resistance, and a far superior ride to any leaf spring suspension. Available on most models.



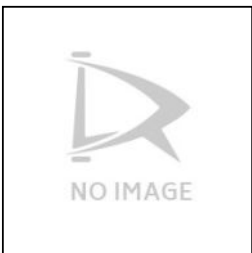
NMMA / NATM Certified

Each year Load Rite trailers undergo a detailed inspection process in order to earn the right to proudly display this certification on products we manufacture.



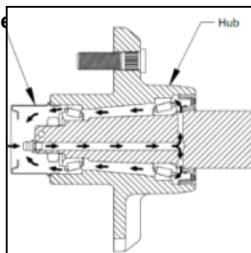
LED Lighting (90" and Wider Models)

LED lights offer far greater reliability than incandescent fixtures. Long-lasting and waterproof design make these lights ideal for any trailer application.



KendaCare – LoadStar® Tire Roadside Assistance Program

[Click here](#) for more information from Americana Tire.



Greaseable Hubs

Trailer with peace of mind knowing that you've inspected the condition and topped off the lubricant level in each hub of your trailer.



Plastic Fenders

Impact-resistant plastic fenders on models with 12" and smaller wheels. Wheels 13" and larger require aluminum fenders.



Aluminum Diamond Plate Fenders

A stylish design combined with extreme durability. Standard on all single axle models with 13" and larger wheels.



Winch

A winch is standard equipment on all boat and PWC models. Capacity and features vary by application.



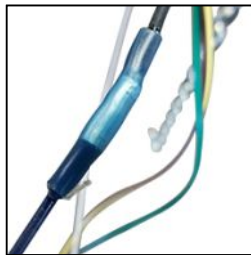
DOT Rated Tires and Lighting

All Load Rite original equipment tires and lighting components are fully DOT approved.



Winch Stand

Standard equipment on all boat and PWC models. Specifications vary by application.



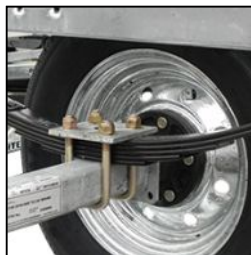
Heat-Shrunk Sealed, Concealed Wiring

Standard equipment on all trailers 17' and longer except welded frame models.



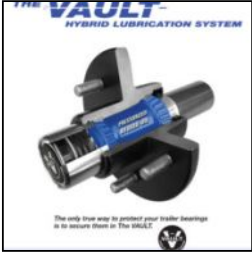
2 Plus 3 Years Coupler to Taillight Warranty

Load Rite's premiere warranty exclusive to our Elite line of trailers.



Galvanized Axle With Leaf Springs

OPTIONS



Vault® Hubs

Vault® - The VAULT® "Hybrid Lubrication System" uses a semi-fluid oil in a pressurized chamber to give you the ultimate in wheel bearing lubrication and protection. At ambient temperatures the oil is thick with a viscosity approaching grease. As the bearing temperature rises during towing, the VAULT's Hybrid Oil thins out replenishing the bearings with lubricant and dissipating heat. No inspection, no maintenance and no service required. **Vault® hubs require Dexter axle. Vault® and Kodiak® stainless disc brakes cannot be combined.* Consult a dealer to confirm application.



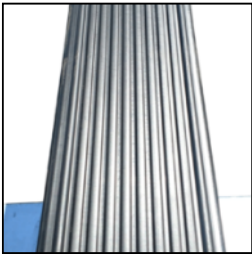
Brakes on Axles Where Available

Important Safety Issue - Brake Requirements Brake laws vary by state and require dealers to sell trailers that comply with the brake laws of the state where the trailer will be registered. ***This is a very important safety issue.*** For full information contact the appropriate state Motor Vehicle Department. As always, Load Rite recommends brakes on all axles where available.



Carpeted Skirted Fender

Skirted fenders protect the hull finish in two ways. First, the carpet facing the hull help protect from fender contact while loading and unloading. Second, it protects the hull from road debris picked up by the tires. Two valuable precautions for a treasured friend. Optional on *most* models with aluminum fenders as standard equipment. Some models require galvanized fender step to accommodate this option.



Plastic Bunk Covers

These multi-purpose covers provide a smooth surface to help a metal-hulled boat or pontoon to slide easier when launching and loading. They also offer an insulating barrier to help prevent corrosion for metallic hulled craft. Protect your aluminum hull. ***Highly recommended for metal-hulled boats and pontoon applications. Not recommended for gel-coat, plastic, or painted metal hulls.***



Rubber Fenders

Rubber fenders are intended for use on dealer yard trailers. Yard trailers need the flexibility to adapt to many different hull shapes without imparting any damage in the process. Rubber fenders minimize the possibility of damage should the fender contact the boat hull.



Stainless Steel Disc Brakes

Optional stainless steel brakes available for *most* 14", 15" and 16" wheel applications. Can be used with surge and electric over hydraulic actuators.* *May require optional axle installation. Check with your local dealer before ordering.*



Spare Tire and Carrier

The most important option to consider, every trailer should have a spare tire readily available. Consult dealer for recommended bracket for individual application.



Electric Over Hydraulic Brakes

EOH brakes offer electric in-cab control of standard hydraulic disc brakes. Requires in-cab controller and 7-pin round electrical connection to the tow vehicle.



LED Lighting (90? and under Models)

LED lights offer far greater reliability than incandescent fixtures. Long-lasting and waterproof design make these lights ideal for any trailer application.



PVC Side Guides

PVC side guides provide additional guidance when lining up to load on steep ramps. Optional on most other boat trailers including all 5 STARR models.



Swing Tongue

Applications are limited by trailer capacity and tongue length. Not available on models exceeding 6,000 lbs. capacity. Consult with a dealer.



Stainless Brakelines

A valuable upgrade to any trailer, but especially those to see service in coastal regions with salt water exposure.



Aluminum Wheels

A stylish option available with bias-ply or radial tires for most models in 12", 13", 14", 15" and 16" sizes.



Drop-Style Tongue Jack

An upgraded jack that provides greater capacities and fast setup with no need to swivel.

2? by 6? Bunks

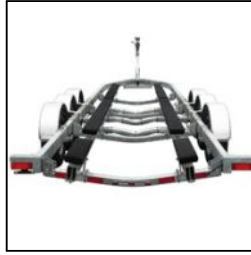
Marine grade carpet over 2" x 6"

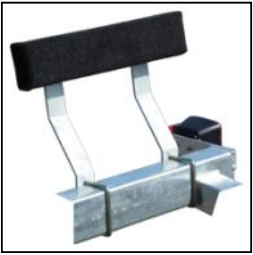
dimensional lumber.



102? Overall Width (96? and Wider Models)
Add extra width to standard 96"

wide trailers.





Carpeted Side Guides

Standard on most skiff and jon models.